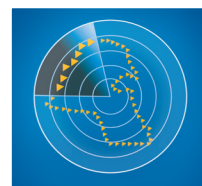


# AL AHLI KUWAITI FUND

## FACT SHEET - NOVEMBER 2010



الصندوق  
الأهلي الكويتي  
Al Ahli Kuwaiti Fund

### Fund objective

To achieve capital growth through investing in the shares of companies registered at the Kuwait Stock Exchange by realizing outstanding investment returns above the market average with an acceptable level of investment risk.

### Executive summary

Fund type:	Open-Ended
Subscription /Redemption:	Monthly
Launch date:	February 2003
Management fees:	1.50%
Manager:	Al Ahli Bank of Kuwait
Local Manager	Ahli Capital Investment Co.
Custodian:	Kuwait Clearing Co.
Nominal price:	KD 1.000 / Unit
Next dealing date:	29 <sup>th</sup> Dec. 2010
Last dealing price:	KD 1.067919 / Unit

### Current performance summary

NAV	Nov'10	YTD'10
KD 1.068	+0.43%	+9.67%

### Monthly performance

Jan'10	Feb'10	Mar'10	Apr'10	May'10	Jun'10
-0.59%	+4.93%	+1.06%	+0.27%	-2.45%	-1.77%

Jul'10	Aug'10	Sep'10	Oct'10	Nov'10	Dec'10
+2.22%	+2.30%	+2.89%	+0.42%	+0.43%	

### Historical performance

2009	2008	2007	2006	2005	2004	2003	Since Inception
+0.9%	-27.9%	+32.5%	-15.4%	+57.5%	+2.7%	+37.8%	+92.89%

Returns inclusive of dividends / Bonus distributed

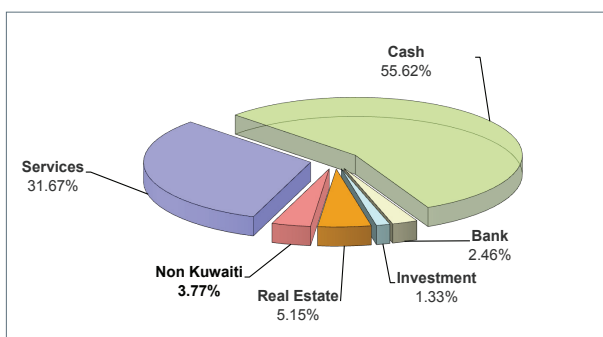
### Profits distributed

2003	2004	2005	2006	2007	2009	Since Inception
Cash	Cash	Cash	Cash	Cash	Cash	Cash
KD 0.190	KD 0.070	KD 0.105	KD 0.120	KD 0.160	KD 0.060	KD 0.705
						15.6%

### Performance chart since inception



### Sector allocation



Ahlan Ahli 1 899 899  
www.eahli.com

### Fund top 5 positions

1	MTC (Zain)
2	CGC
3	NMTC
4	SCEM
5	Gulf Bank

### Fund performance analysis

Best month performance	+17.5%
Worst month performance	-17.71%
No. of up months	58
No. of down months	36
Average monthly gain	+0.988%

### Market performance

	MTD	YTD
Kuwait price index	-1.62%	-1.00%
Kuwait weighted index	-1.16%	+22.81%
KIC index	-1.27%	+19.20%

### Market review:

The Kuwait Stock Exchange on the Funds NAV date 24th of November 2010 closed negative. The KSE price index was -1.62% MTD and -1.00% YTD, closing at 6,935.00 points while the KSE weighted index decreased by -1.16% MTD and +22.81% YTD, ending at 473.73 points.

most sectors on the KSE moved downwards, Banking -0.14%, Investment -2.91%, Insurance -2.65%, Real Estate -0.46%, Industrial -3.64%, Services +0.02%, Food -4.46% and the Non-Kuwaiti sector -2.56%.

The daily average Volume and average value of shares traded on the exchange for the year was 319.68 million shares and KD 53.17 million respectively. Total Market Capitalization stood at KD 35.27 Billion.

The Price Index achieved a month high of 7,152.4 points on the 7th of November.

### Fund review:

Trading activity in November was dominated speculation and low volumes with several deferring options arising from the Zain and other deals announced. The news on Ireland's crisis also caused the markets to react negatively. The volatility in the market has reaffirmed the need for a prudent approach to investing on selective and operational stocks. The coming month is expected to witness increased volumes and price swings as Fundamental and Technical analysts review their expected forecasts for largely followed companies.

The Al Ahli Kuwaiti fund performance was +0.43% MTD and +9.67% YTD as compared to the KSE weighted index which was -1.16% MTD and +22.81% YTD, and its benchmark the KIC index that recorded -1.27% MTD and +19.20% YTD.

The fund managers constantly take into account the volatility of the stock market as a whole in deciding the asset mix and cash percentages in this volatile period, this approach in turn has and will continue to reflect on the Fund's overall future performance. We believe that an extremely careful stock selection criteria needs to be continuously adopted in the coming periods with risk aversion at its peak. The fund holdings are monitored regularly, various risk factors are taken into account by our investment team and appropriate action to rebalance both stock and cash allocations is taken when needed.

